



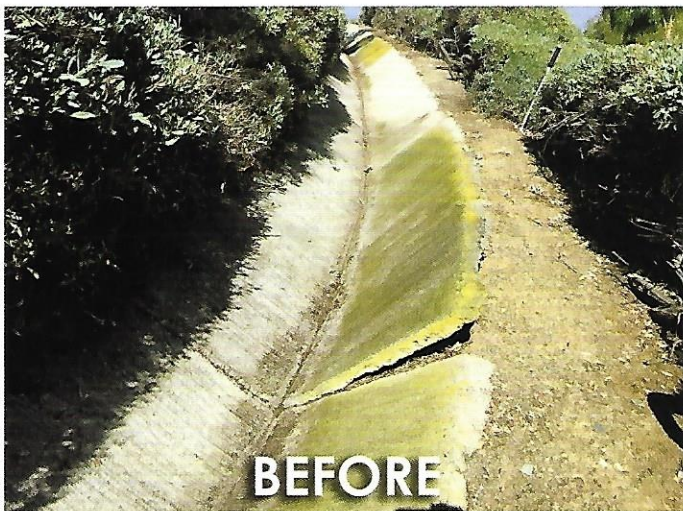
Concrete Hazard Solutions
TRIP HAZARD CONCRETE REPAIR

Hillside V-Ditch Crack Repairs



**FREE
PROPERTY
SURVEYS**

Hillside V-Ditch Full Replacement



Concrete Trip Hazard Repair

- Concrete Grinding
- Concrete Remove and Replace
- Concrete Crack Repair
- Concrete Patching
- Hillside V-Ditch Repair

Chose CHS Because-

- Free Survey of Your Property
- Superior Service



- We Recycle-
Members U.S. Green Building Council
- Leaves a Smooth Non-Slip Surface
- Dust Free
- California Licenses
DO-6 For Grinding
C-8 For Replacing

Concrete Grinding Specifications

1. At the minimum the scope of grinding shall be any vertical displacement in a path of travel of 1/4" or greater. At a maximum a 2" vertical displacement may be repaired by grinding. Over 2" must be repaired by replacement.
2. Grinding shall be performed by a dry hand grinder with an attached vacuum to contain the generated concrete dust. For larger grinds the initial removal may be performed using a scarifier with attached dust control, with the final surface completed with the hand grinder.
3. Completed grinds shall be smooth and sloped back at a minimum of a 1:8 slope. An example would be a 1 inch vertical displacement will be sloped back at least 8" from the point of the lip. A 1/2" vertical displacement will be sloped back 4".
4. The completed grind should be squared off at the back to allow for a clean look. The concrete on the other side of the grind should be left untouched. The finished surface will initially be lighter in color and the aggregate will show.
5. The finish grind should not be slippery. It should have about the same coefficient of friction as the undisturbed concrete surface.

These specifications are intended to be in compliance with the Americans with Disabilities Act. See paragraph 4.1.6(3)a and the diagram in fig. 7. ADAAG U.5.1